

iCMS

User`s Manual



7. iCMS VIEWER

7.1 System Recommendations

	Recommended
CPU	Core 2 Duo 2.26GHz or higher
Main Memory	2GB or higher
Video Memory	512MB or higher
Display Resolution	1024 x 768 (with 32bit color) or higher
HDD Storage Space	30GB or higher
Network	100~1000 Mbps Fast Ethernet
Operating System	Mac OS 10.6.0 or higher

NOTE

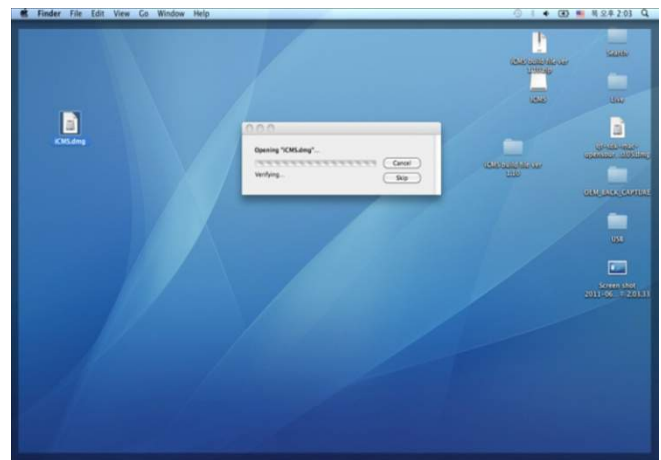
It is recommended to connect Max. 16 HD-SDI (Full HD) cameras with iCMS.

WARNING

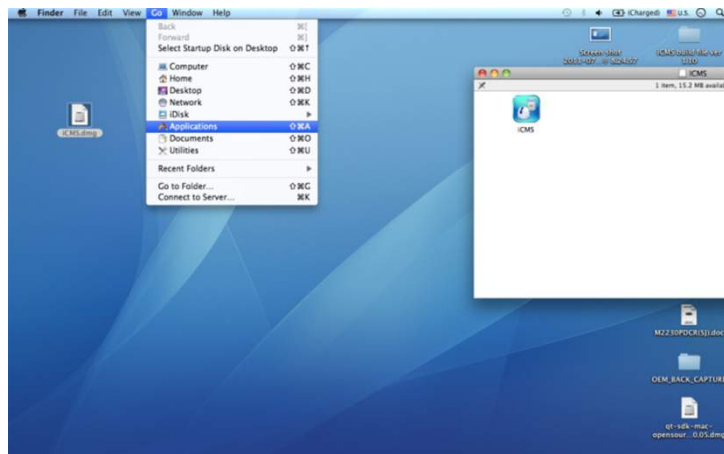
DUE TO A LIMITATION OF A MAC, CONNECTING MORE THAN 16 HD-SDI (FULL HD) CAMERAS MAY RESULT IN MALFUNCTIONING OF THE SOFTWARE. TO CONNECT MORE THAN 16 HD-SDI (FULL HD) CAMERAS, PLEASE ENABLE DUAL STREAMING OPTION ON THE DVR.

7.2 Program Installation

- Please follow the program installation procedures below.
- Open the file 'iCMS.dmg'.



- Virtual driver will be installed (Driver name is "iCMS").



- In the virtual driver, users will find iCMS icon. Please move the iCMS icon to 'Application' folder ('Application' folder is located in the 'Go' Menu below).



7.3 Login

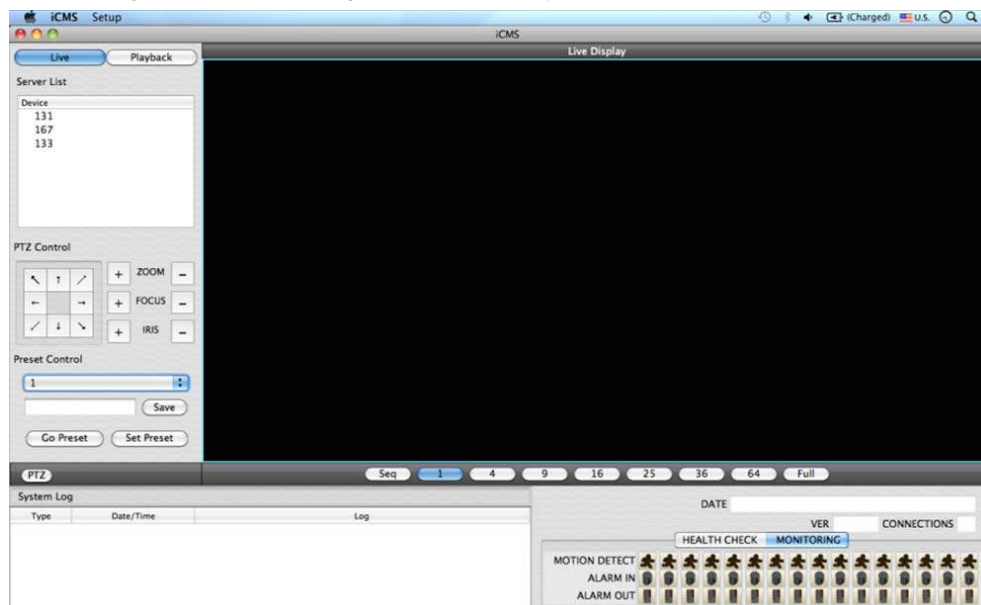
- After installation of the software, iCMS icon appears in 'Application' folder.
- Please double Click on the icon to execute the program.
- Select User Name by Clicking upside down arrow and enter corresponding Password to login.



7.4 Watch Mode

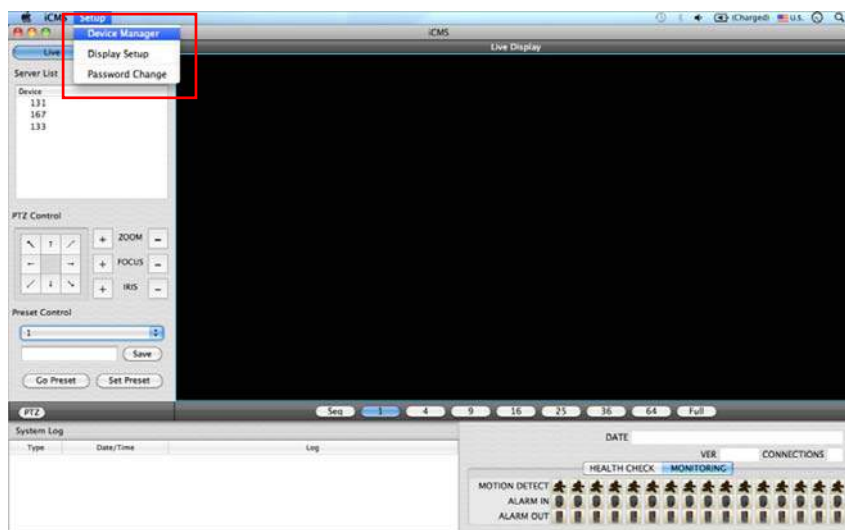
7.4.1 Log-in Screen

- Please Click 'Device manager' and the following screen will display.



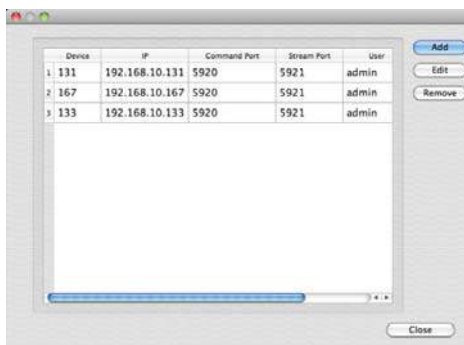
7.4.2 Local Setting

- Please Click '**Setup**' button on the top of the Toolbar and the following screen will display.
- There are three types of setup such as Device Manager, Display Setup and Password Change.



7.4.2.1 Display Manager

- Please Click '**Device manager**' and the following screen will display.



- Users will see the existing DVRs on the list, if there is any added DVR previously.
- Please Click '**Add**' to add new device.

The screenshot shows the 'Device Info' form. It contains the following fields:

- Device Name
- Description
- IP
- Command Port
- Stream Port
- User Name
- Password
- Confirm Password

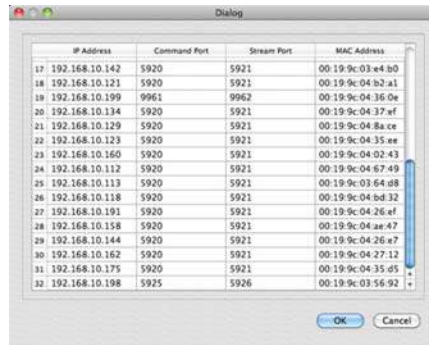
Buttons for 'Scan Device', 'Cancel', and 'OK' are at the bottom.

- Please type all the necessary information in the empty space and Click 'OK' to submit the device information

• Device Info

- Device Name: input the DVR site name which will be displayed on the Server list. Please note that this name has nothing to do with the ID registered in DVR. Users may create the name that is fairly easy to distinguish.
- Description: type brief description of the site
- IP Address: input IP address or Domain Name of DVR (check with **SETUP>DEVICES>Network** in DVR).
- Command Port: input Administrator's number among port numbers set in DVR (check with **SETUP>DEVICES>Network** in DVR). (Default, 5920)
- Stream Port: INPUT Video/Audio number among port numbers set in DVR (check with **SETUP>DEVICES>Network** in DVR). (Default, 5921)
- User Name: Type authorized ID of the DVR. Default ID is **admin**.
- Password: Type corresponding password of the ID. Default Password is **1111**.
- Confirm Password: Retype the password to confirm.

- If users want to scan the devices instead of typing the information manually, please Click **'Scan device'**. It will automatically detect DVR units currently connected to local networks.
- Click **"Scan Device"**, then following **'Dialog'** will pop up.



- Including IP address, the information of connected DVRs in the network will be listed.
- Select the one and Click **'OK'**. Then, the following window will pop up.



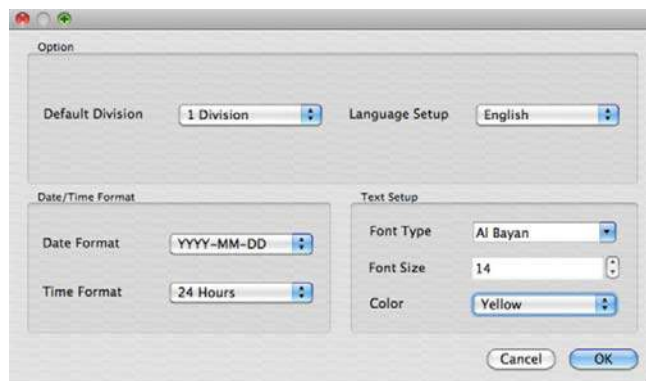
- Please fill out all the necessary information including Device name, Description (not mandatory), User Name and Password and confirm password. Please note that the User Name and Password have to be same as the DVR setting.
- When users want to edit the existing device information, please choose the device and Click **'Edit'**.
- When users want to delete the existing device information on the list, please select the device and Click **'Remove'**.
- If users click the **'Remove'** button, it will show the message below.



- Please Click the **'OK'** button to remove the connected device

7.4.2.2 Display Setup

- Please Click **'Display Setup'** and the following screen will display.

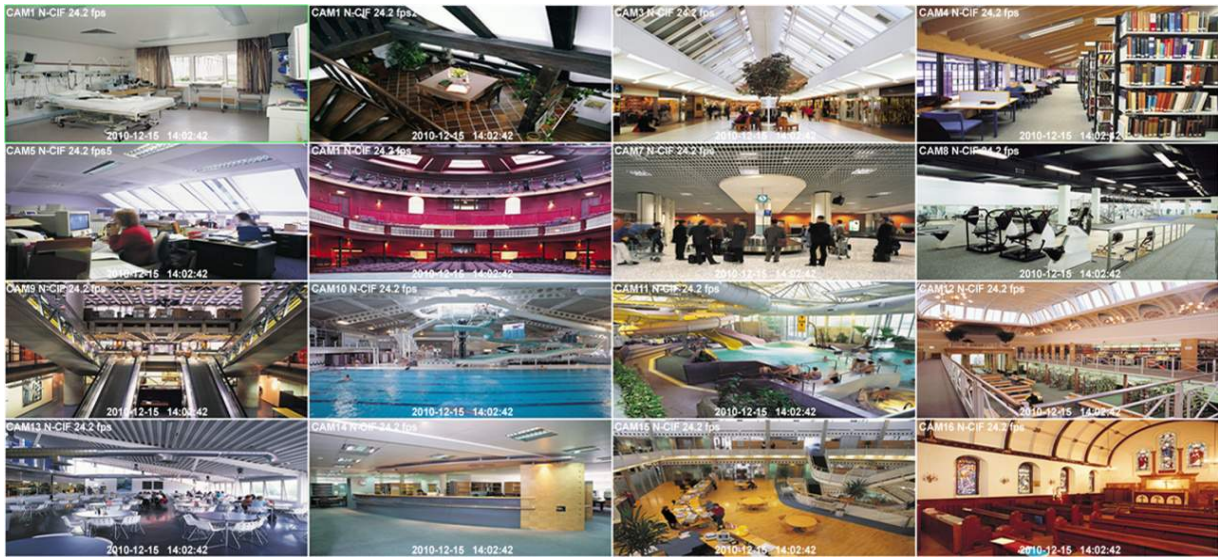


- Users can adjust and set the peripheral values of the display window.
 - Default Division: Users can select the number of division of display channels when the program initially starts the screen. (1, 4, 9, 16, 25, 36 or 64).
 - Users can choose either English or Korean in language setup.

NOTE

This option will be applied after program restarts.

- Date / Time format: Users can adjust and set the mode of date / time display in accordance with the location.
 - Date Format: select the date format among YYYY-MM-DD/MM-DD-YYYY/DD-MM-YYYY.
 - Time Format: select the time format between 24Hours/ 12 Hours AM/PM.
- Display Font: Users can change the font of the name and display time of each channel.
 - Font Type: select the type of font between Arial / Courier.
 - Font Size: select the size of the font from 10 to 20 and the default is 15.
 - Color: select the color among 16 different colors.



7.4.2.3 Password Change

- Please Click Password Change in setup menu to change the password. This ID and password is for opening the iCMS. This is not related to any DVR's login password

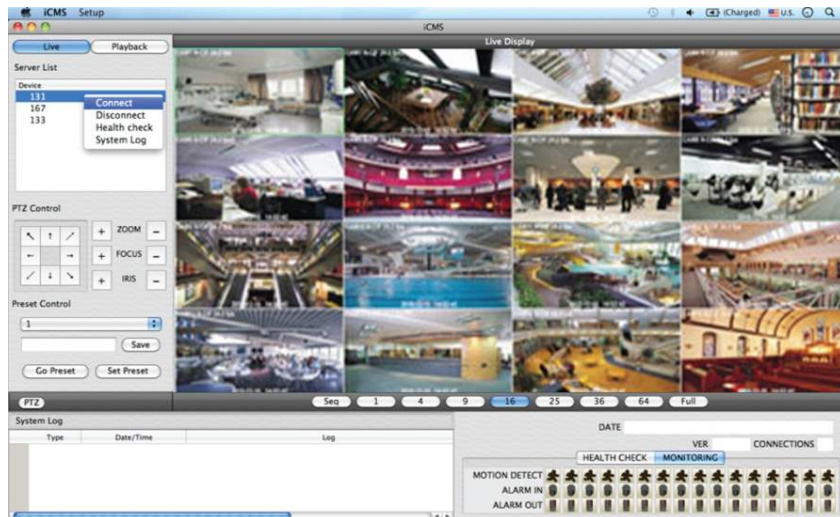


- Please select the ID from the drop down list and type original password.
- Please type new password and confirm the password below.
- If the information is filled out, click 'OK' to finish the Password change.

7.5 Live View

7.5.1 Connection

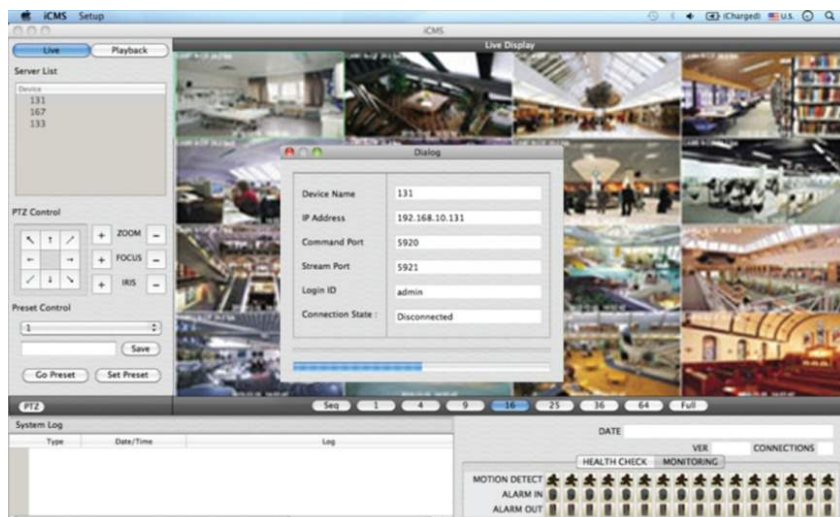
- Please choose one of the registered sites in Server list on the right hand side of the 'Live Display' screen and the right Click on the mouse button will pop up the menu with 'Connect'.
- Click 'Connect' to connect the DVR.



- To have multiple channels, please choose the channel from the bar below the 'Live Display' screen (1, 4, 9, 16, 25, 36, 64 and Full).

7.5.2 Display Mode

- Full Screen Mode: Select a channel and Click on number "1" button. Then, the corresponding channel will display in Full Screen.
- Quad Screen Mode: Click on No.4 button and a quad screen will display. The quad screen is in combination of 1~4, 5~8, 9~12 and 13~16. If users select Channel No. 7 and Click the button, 5~8 quad screen will display. Similarly, if users select Channel No. 16, 13~16 quad screen will display.
- 9-Split Screen Mode: Click on No.9 button and 9-split screen will display. The 9-split screen is in combination of 1~9 and 8~16. If users select Channel No. 9 and Click the button, 1~9 split screens will display. Similarly, if users select Channel No. 10, 8~16 split screens will display.
- 16-Split Screen Mode: Click on No.16 button and 16-split screens will display.
- 25-Split Screen Mode: Click on No.25 button and 25-split screens will display.
- 36-Split Screen Mode: Click on No.25 button and 36-split screens will display.
- 64-Split Screen Mode: Click on No.64 button and 64-split screens will display.
- Seq: Click 'Seq' and then it will show an ordered list of display which will change the channel of live display to next channels. For example, In 4 channel display CH5 to CH8 on the display screen will change to CH9 to CH12 consequently.

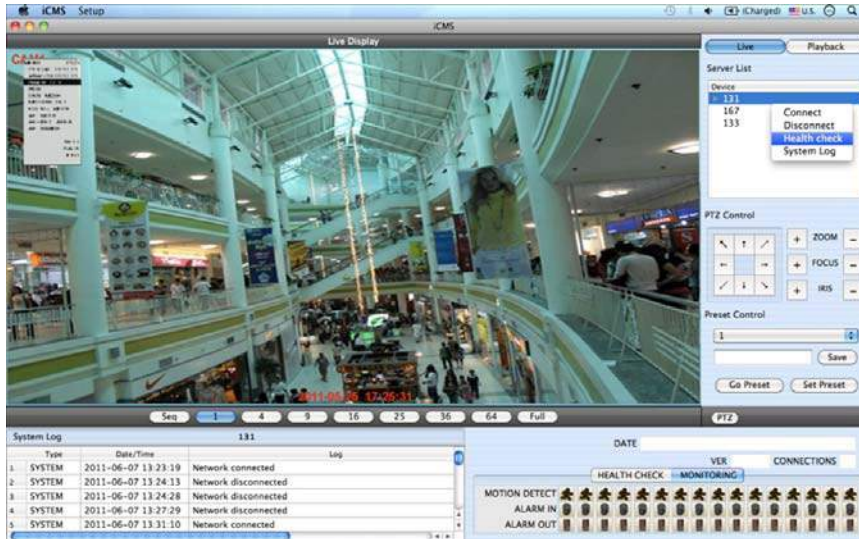


NOTE

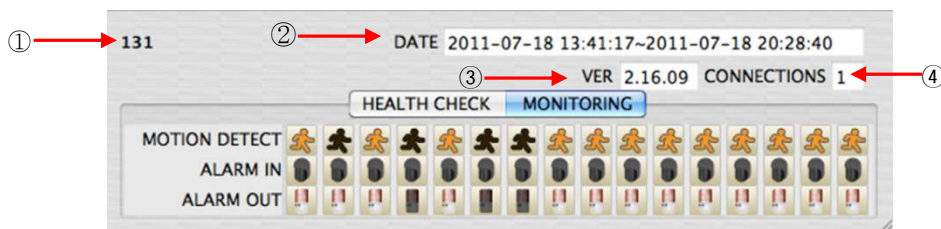
The selected channel is outlined in blue

7.5.3 Health Check

- Please choose one of the registered sites in Server list and the right Click on the mouse button will pop up the menu with 'Health Check'.
- Please choose 'Health check' function when users want to check the status of the DVRs.
- Now users can choose either Health Check or Monitoring to see the status of the DVR at the bottom of the right corner.



- Health check shows the status of how many cameras are activated, how many HDDs are available, and how many channels are recorded.
- Monitoring shows the status of the number of motion detection and how many alarm in and alarm out are activated.



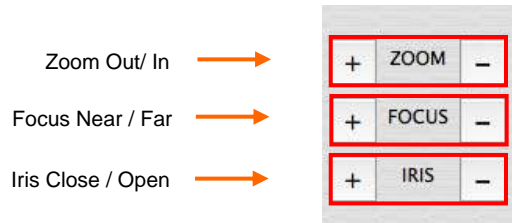
Number	Description
1	DVR name
2	Start and finish recorded date and time
3	The version of the firmware
4	The number of Connected network(ex. CMS, Mobile CMS, etc.) to the DVR

7.5.4 PTZ Control

- Under the server list, PTZ control can be found. This is for the control of Pan/Tilt/Zoom cameras.
- Buttons on the screen have the following functions.
 - Up/Down/Left/Right direction buttons



- Zoom In/Out, Focus Near/Far, Iris Close/Open



- Preset Control button



- Please choose the number from the drop down list from 1 to 256.
- After selecting the number, please type the description on the empty space below the drop down list and Click "Save".
- If users think that the certain spot is important or need to have precautions, then they can set up the spot as 'Preset'.
- When the preset is setup up, Click 'Go Preset' to move to preset spot.
 - PTZ control menu can be hidden by Clicking PTZ ICON below the PTZ menu.

7.5.5 System Log

- In the Live mode, system Log is shown. This will allow users to check System Log of Remote Site (DVR).

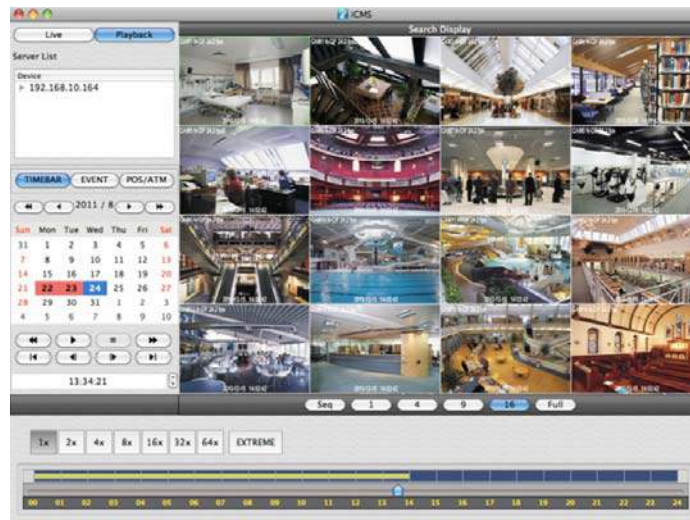
System Log		131	
Type	Date/Time	Log	
1	SYSTEM 2011-06-07 14:32:14	Network connected	
2	SYSTEM 2011-06-07 14:33:18	Network disconnected	
3	SYSTEM 2011-06-07 15:05:53	Network connected	
4	SYSTEM 2011-06-07 15:06:16	Network disconnected	
5	SYSTEM 2011-06-07 15:12:49	Network connected	

7.6 Search Mode

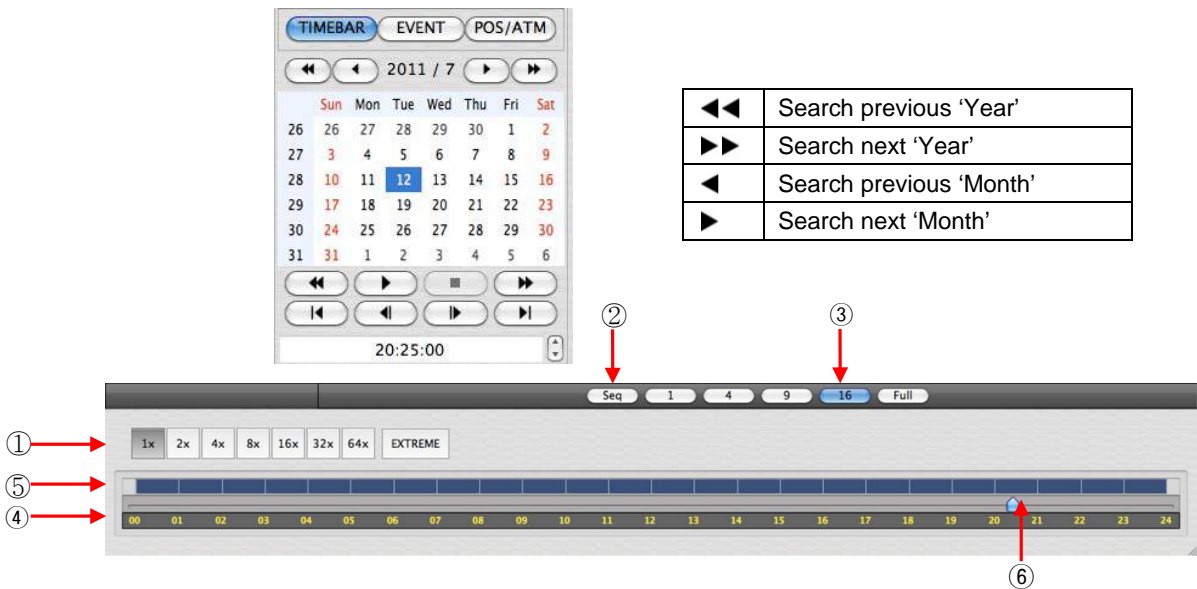
- This involves searching recorded video to playback the video of a specific date and time.
- Users are able to search the recorded data in the iCMS program by Date/Time, Event, and POS/ATM Search.
 - **Date/Time Search:** search by inputting date/time.
 - **Event Search:** search by event.
 - **POS/ATM Search:** search by POS or ATM text with time.

7.6.1 Date/Time Search

- Click Playback and following screen will display.



- Please choose one of the devices to playback from the Server List and right Click on the mouse to have popup menu with Connect.
- Select Date
 - In calendar, dates with recorded data are marked in red.
- Select the date among the dates marked in red.
- Select Time
 - Please select the time that users want to playback by Clicking ▲, ▼ buttons on the right-hand side to adjust the time or drag the Time Select Bar with mouse.

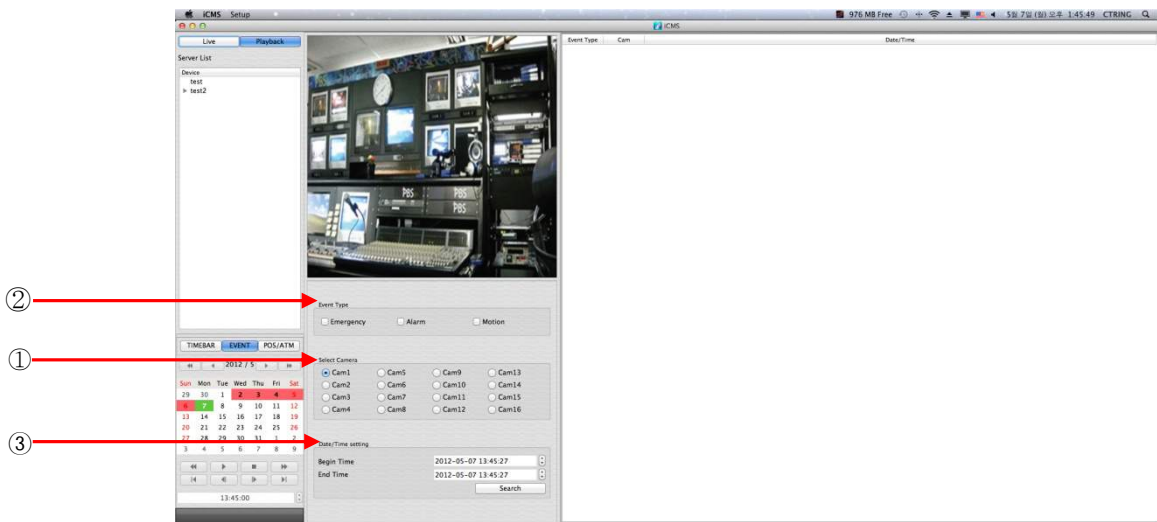


1	Fast Forward/Backward & Playback (Click the button to increase the speed by x1, x2, x4, x8, x16, x32, x64 and Extreme)
2	Sequence Mode
3	Display Mode (Click the button to divide the screen by 1, 4, 9, 16 and Full)
4	Time Bar (24 Hour)
5	Data Bar (Recorded data)
6	Time Select Bar

- When Date/Time search is completed, please Click Playback control button to begin playback.

7.6.2 Event Search

- The Event button allows users to search event recorded data of DVR.
- To start the event search, please Click 'EVENT' and users will see the following screen.

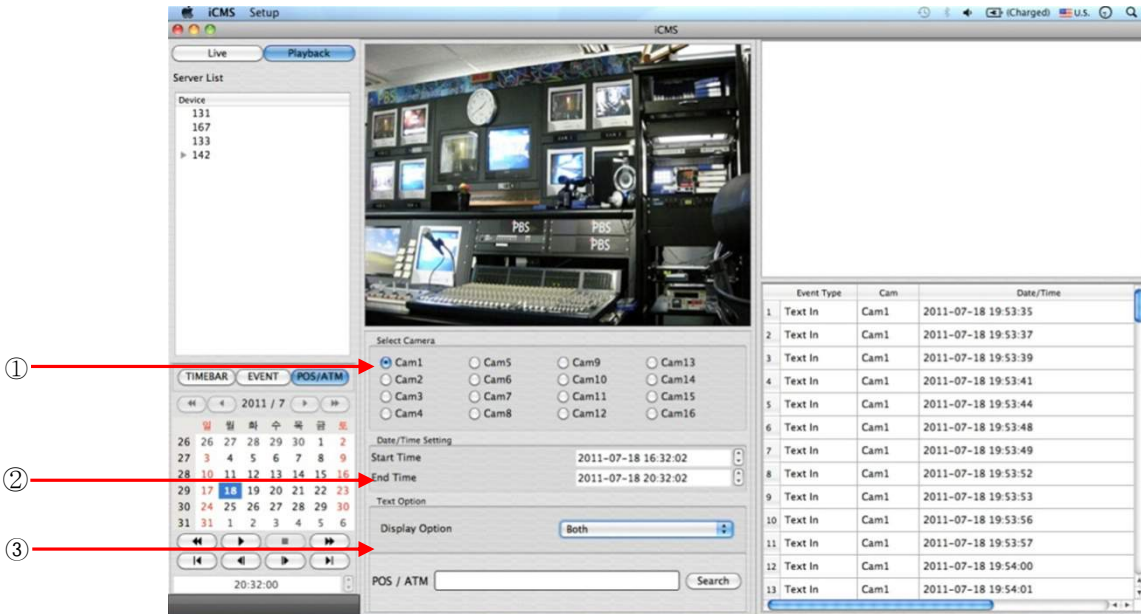


- Please choose one of the devices among the 'Server List' and right Click on the mouse to have popup menu with Connect.

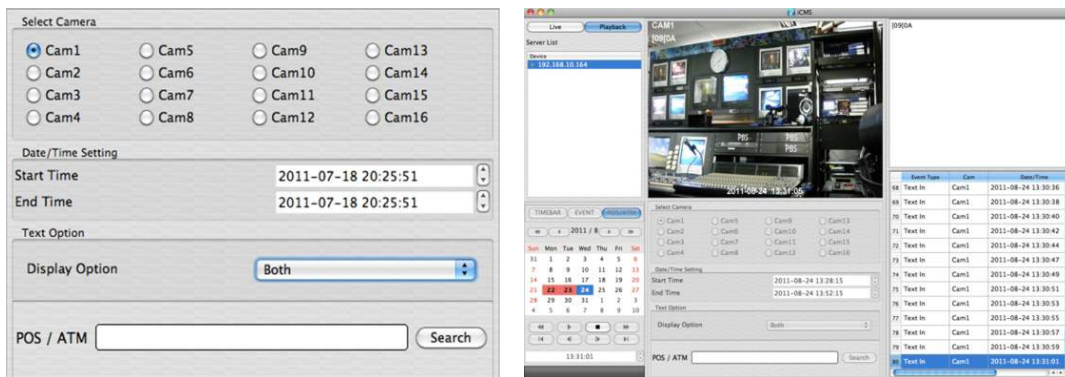
- Please Click '**Connect**' to start the event search
- Event search has Event Type, Select Camera and Date/Time setting.
 - ① **Event Type:** it has Emergency, Alarm and Motion. Please choose one event that users want to use.
 - ② **Select Camera:** Please select the camera that users want to view from Cam1 to Cam 16 for the event (Only 1 camera can be selected).
 - ③ **Date/Time setting:** Please select the begin and end time by Clicking the up/down arrows and Click "Search"

7.6.3 POS/ATM

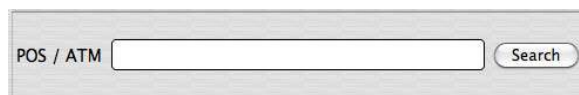
- POS/ATM button allows users to search for the POS/ATM text data by keyword.
- Please Click '**POS/ATM**' button right next to the '**EVENT**' and users will see the following screen.



- Please choose one of the devices among the 'Server List' and right Click on the mouse to have popup menu.
- Please Click '**Connect**' to start the event search
- Event search has Event Type, Select Camera and Date/Time setting.
 - ① **Select Camera:** select a camera which has Text In connection to search (Only 1 camera can be selected).
 - ② **Date/Time setting:** please specify the start and end time
 - ③ **Text Option**
 - **Display Option:** Users are able to select the display option of the playback.
 1. Text window: The detected text will be shown on the '**Windows text**' right next to the '**Display screen**'.
 2. Overlay: The text will be overlaid on the playback video.
 3. Both: The text will be overlaid on the video and the text window as well.
 4. Hide All: The text will not be displayed in both video and the text window.



- Please fill out the text box with the searching keyword and click "Search".



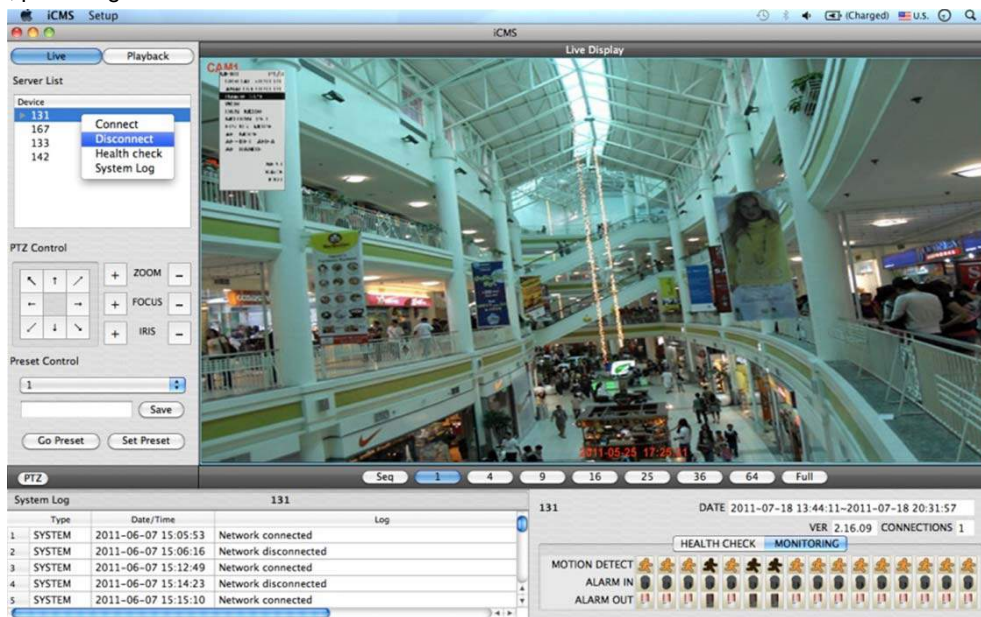
- The following screen shows the result of the POS/ATM search.

Event Type	Cam	Date/Time
1 Text In	Cam1	2011-07-18 19:53:35
2 Text In	Cam1	2011-07-18 19:53:37
3 Text In	Cam1	2011-07-18 19:53:39
4 Text In	Cam1	2011-07-18 19:53:41
5 Text In	Cam1	2011-07-18 19:53:44
6 Text In	Cam1	2011-07-18 19:53:48
7 Text In	Cam1	2011-07-18 19:53:49
8 Text In	Cam1	2011-07-18 19:53:52
9 Text In	Cam1	2011-07-18 19:53:53
10 Text In	Cam1	2011-07-18 19:53:56
11 Text In	Cam1	2011-07-18 19:53:57
12 Text In	Cam1	2011-07-18 19:54:00
13 Text In	Cam1	2011-07-18 19:54:01

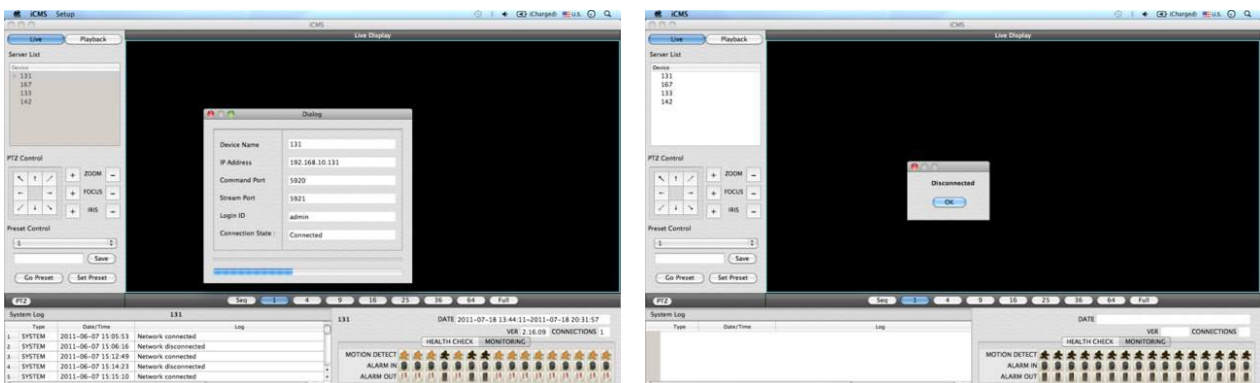
- Double Click on the event to playback of the data.

7.7 Disconnection

- When disconnect, please right Click on the connected site and choose 'Disconnect'



- if users Click 'Disconnect', the message box below will display



7.8 Uninstall

- Please go into the 'Application' folder and right Click on the iCMS icon.



- Please choose 'Move to Trash' to uninstall the iCMS program

xCMS

User`s Manual



8. xCMS VIEWER

8.1 Program Installation

8.1.1 System Recommendations

	Recommended
CPU	Core 2 Duo 2.26GHz or higher
Main Memory	2GB or higher
Display Resolution	1024 x 768 (with 32bit color) or higher
HDD Storage Space	30GB or higher
Network	100~1000 Mbps Fast Ethernet
Operating System	Fedora

NOTE

It is recommended to connect Max. 16 HD-SDI (Full HD) cameras with xCMS.

WARNING

DUE TO A LIMITATION OF A PC CONNECTING MORE THAN 16 HD-SDI (FULL HD) CAMERAS MAY RESULT IN MALFUNCTIONING OF THE SOFTWARE. TO CONNECT MORE THAN 16 HD-SDI (FULL HD) CAMERAS, PLEASE ENABLE DUAL STREAMING OPTION ON THE DVR.

8.1.2 Program Installation Method

- Please follow the program installation procedures below.
- Please select the **'Activities'** on the top left side of the corner, and choose Home directory

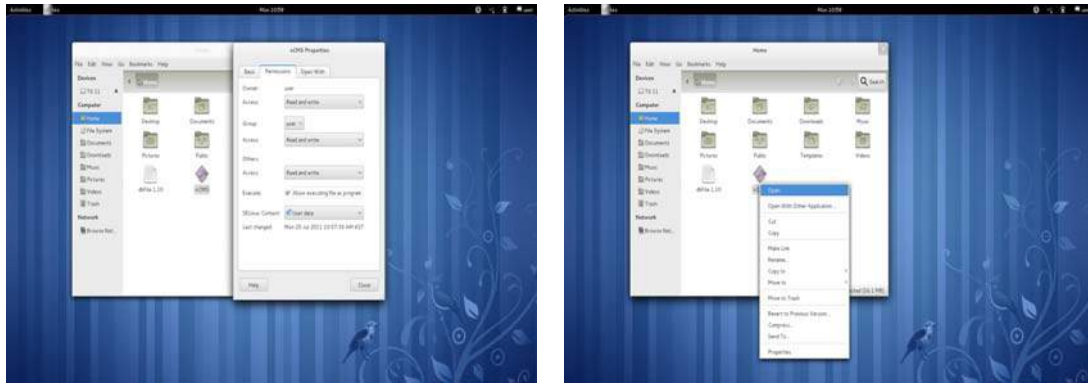


- Please select the **'xCMS'** file and move the file to the Home directory
- Right Click on the mouse and select **'Properties'**.



- Please select the **'Permission'** on the bar menu.

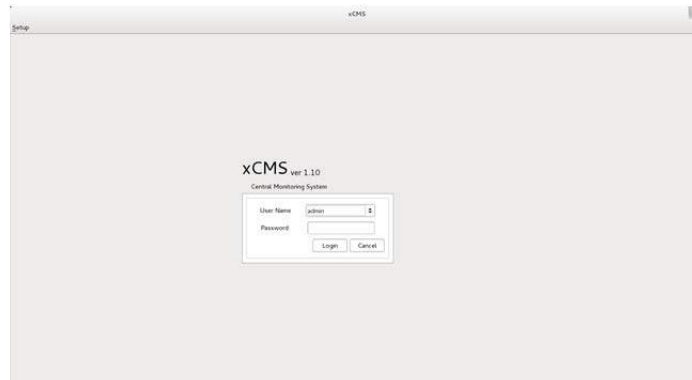
- Please check the box right next to the **“Allow executing file as program”** and if users want to give access to other groups, please change the access level to Read and write.



- Right Click on the 'xCMS' and select 'Open'

8.2 Login

- Please right-Click on the icon and select open to execute the program.
- Select User Name by Clicking upside down arrow and enter corresponding Password to login.



8.3 Watch Mode

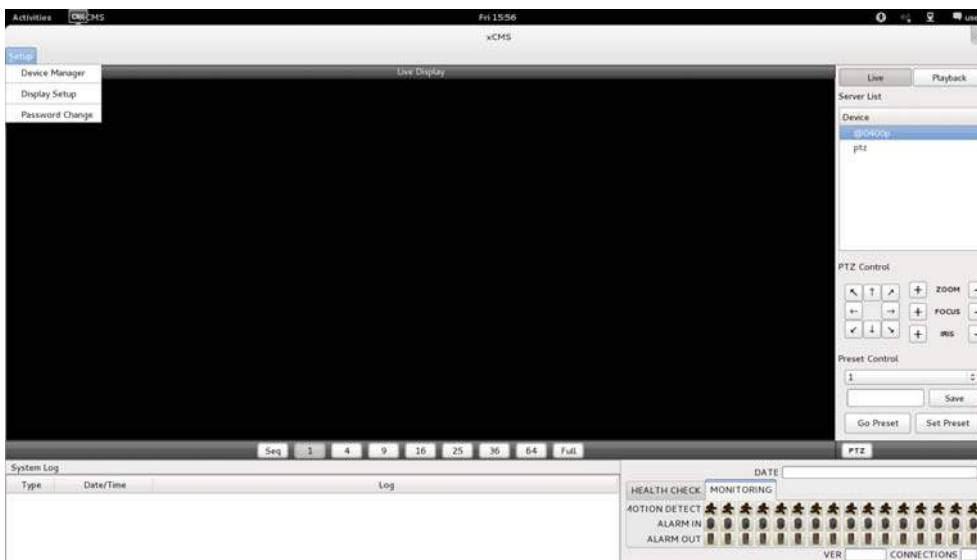
8.3.1 Login Screen

- After users log into the 'xCMS', the following screen will display.



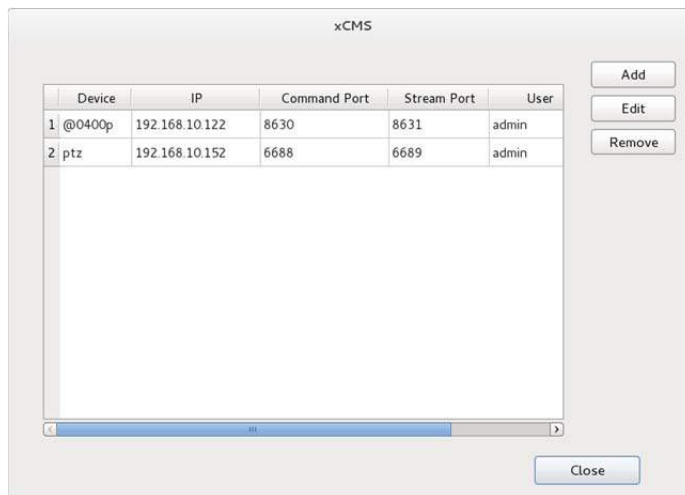
8.3.2 Local Setting

- Please Click **'Setup'** button on the top of the Toolbar and the following screen will display.
- There are three types of setup menu such as Device Manager, Display Setup and Password Change.



8.3.2.1 Device Manager

- Please Click **'Device manager'** and the following screen will display.



- Users will see the existing DVRs on the list, if there is any added DVR previously.
- Please Click **'Add'** to add new device.



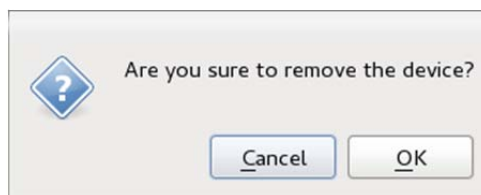
- Please type all the necessary information in the empty space and Click **'OK'** to submit the device information

• **Device Info**

- **Device Name:** input the DVR site name which will be displayed on the Server list. Please note that this name has nothing to do with the ID registered in DVR. Users may create a name that is fairly easy to distinguish.
 - **Description:** type brief description of the site.
 - **IP Address:** input IP address or Domain Name of DVR (check with **SETUP>DEVICES>Network** in DVR).
 - **Command Port:** input Administrator's number among port numbers set in DVR (check with **SETUP>DEVICES>Network** in DVR). (Default, 5920)
 - **Stream Port:** INPUT Video/Audio number among port numbers set in DVR (check with **SETUP>DEVICES>Network** in DVR). (Default, 5921)
 - **User Name:** Type authorized ID of the DVR. Default ID is **admin**.
 - **Password:** Type corresponding password of the ID. Default Password is **1111**.
 - **Confirm Password:** Retype the password to confirm.
- If users want to scan the devices instead of typing the information manually, please Click '**Scan device**'. It will automatically detect DVR units currently connected to local networks.
 - Click "**Scan Device**", then following '**Dialog**' will pop up.

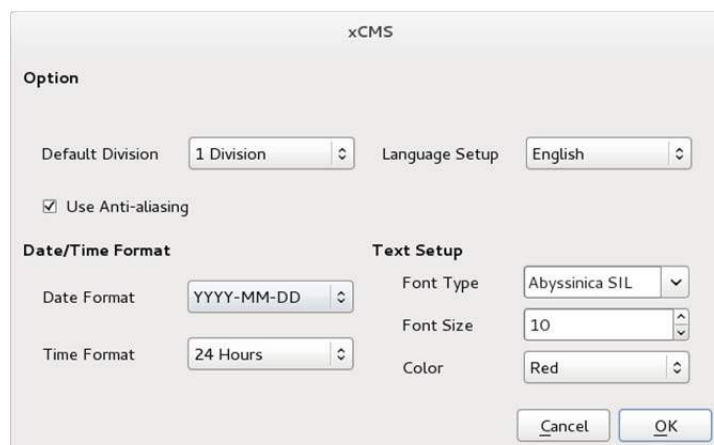


- Including IP address, the information of connected DVRs in the network will be listed.
- Select the one and Click '**OK**'. Then, the following window will pop up.
- Please fill out all the necessary information including Device name, Description (not mandatory), User Name and Password and confirm password. Please note that the User Name and Password have to be same as the DVR setting.
- When users want to edit the existing device information, please choose the device and Click 'Edit'.
- When users want to delete the existing device information on the list, please select the device and Click 'Remove'.
- If users click the 'Remove' button, it will show the message below.



8.3.2.2 Display Setup

- Please Click '**Display Setup**' and the following screen will display.



- Users can adjust and set the peripheral values of the display window.
 - Default Division: Users can select the number of division of display channels when the program initially displays the screen. (1, 4, 9, 16, 25, 36 or 64).
 - Users can choose either English or Korean in language setup.

NOTE

This option will be applied after program restarts.

- Date / Time format: Users can adjust and set the mode of date / time display in accordance with the location.
 - Date Format: select the date format among YYYY-MM-DD/MM-DD-YYYY/DD-MM-YYYY.
 - Time Format: select the time format between 24Hours/ 12 Hours AM/PM.
- Display Font: Users can change the font of the name and display time of each channel.
 - Font Type: select the type of font between Arial / Courier.
 - Font Size: select the size of the font from 10 to 20and the default is 15.
 - Color: select the color among 16 different colors.



8.3.2.3 Password Change

- Please Click Password Change in setup menu to change the password.

The screenshot shows a 'Password change' dialog box with the following fields and buttons:

- ID: dropdown menu showing 'admin'
- Password: text input field
- New Password: text input field
- Confirm Password: text input field
- Buttons: Cancel and OK

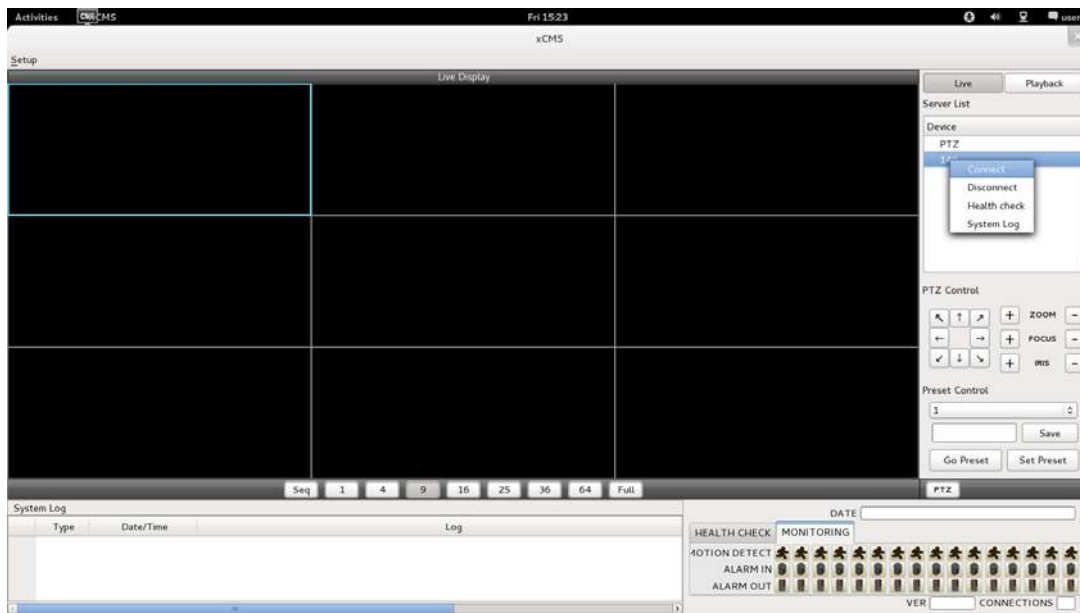
- Please select the ID from the drop down list and type original password.
- This ID and password is for opening the xCMS. This is not related to any DVR's login password
- Please type new password and confirm the password below.
- If the information is filled out, click 'OK' to finish the Password change.

8.3.3 Live

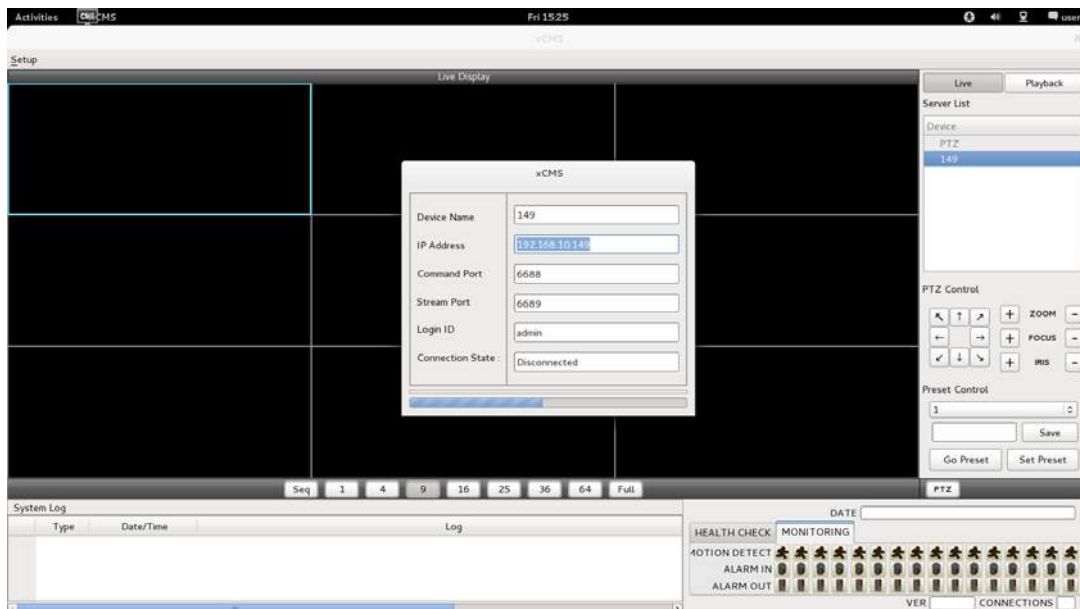
8.3.3.1 Connection

- Please choose one of the registered sites in Server list on the right hand side of the 'Live Display' screen and the right Click on the mouse button will pop up the menu with 'Connect'.

- Click **'Connect'** to connect the DVR to the 'xCMS'.



- To have multiple channels, please choose the channel from the bar below the 'Live Display' screen (1, 4, 9, 16, 25, 36, 64 and Full).



- **Full Screen Mode:** Select a channel and Click on number "1" button. Then, the corresponding channel will display in Full Screen.
- **Quad Screen Mode:** Click on No.4 button and a quad screen will display. The quad screen is in combination of 1~4, 5~8, 9~12 and 13~16. If users select Channel No. 7 and Click the button, 5~8 quad screen will display. Similarly, if users select Channel No. 16, 13~16 quad screen will display.
- **9-Split Screen Mode:** Click on No.9 button and 9-split screen will display. The 9-split screen is in combination of 1~9 and 8~16. If users select Channel No. 9 and Click the button, 1~9 split screens will display. Similarly, if users select Channel No. 10, 8~16 split screens will display.
- **16-Split Screen Mode:** Click on No.16 button and 16-split screens will display.
- **25-Split Screen Mode:** Click on No.25 button and 25-split screens will display.
- **36-Split Screen Mode:** Click on No.25 button and 36-split screens will display.
- **64-Split Screen Mode:** Click on No.64 button and 64-split screens will display.
- **Seq:** Click 'Seq' and then it will show an ordered list of display which will change the channel of live display to next channels. For example, In 4 channel display, CH5 to CH8 on the display screen will change to CH9 to CH12 sequentially.

NOTE

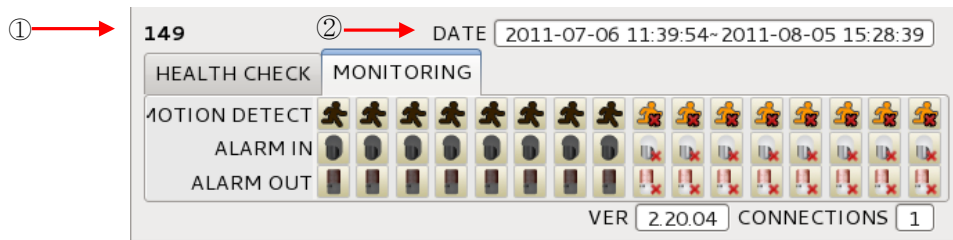
The selected channel is outlined in blue

8.3.3.2 Health Check

- Please choose one of the registered sites in Server list on the right hand side of the 'Live Display' and then right Click on the mouse button will pop up the menu with 'Health Check'.
- Please choose 'Health check' function when users want to check the status of the DVRs.
- Now users can choose either Health Check or Monitoring to see the status of the DVR at the bottom of the right corner.



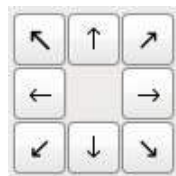
- Health check shows the status of how many cameras are activated, how many HDDs are available, and how many channels are recorded.
- Monitoring shows the status of the number of motion detection and how many 'Alarm In' and 'Alarm Out' are activated.



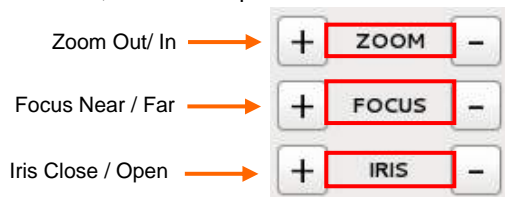
Number	Description
(1)	DVR name
(2)	Start and finish recorded date and time

8.3.3.3 PTZ Control

- Under the server list, PTZ control can be found. This is for the control of Pan/Tilt/Zoom of camera.
- Buttons on the screen have the following functions.
 - Up/Down/Left/Right direction buttons



- Zoom In/Out, Focus Near/Far, Iris Close/Open



- Preset Control button



- Please choose the number from the drop down list from 1 to 256.
- After selecting the number, please type the description on the empty space below the drop down list and Click "Save".
- If users think that the certain spot is important or need to have precautions, then they can set up the spot as 'Preset'.
- When the preset is setup up, Click 'Go Preset' to move to preset spot.
 - PTZ control menu can be hidden by Clicking PTZ ICON below the PTZ menu.

8.3.3.4 System Log

- In the Live mode, system Log is shown. This will allow users to check System Log of Remote Site (DVR).

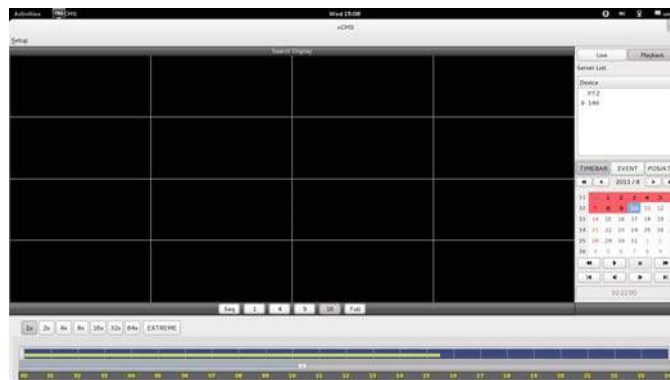
System Log		149	
	Type	Date/Time	Log
1	SYSTEM	2011-07-06 11:38:43	System start
2	SYSTEM	2011-07-06 11:43:50	Playback enter
3	SYSTEM	2011-07-06 11:44:12	Playback exit

8.4 Search Mode

- This involves searching recorded video to playback the wanted video of a specific date and time.
- Users are able to search the recorded data in the xCMS program by Date/Time, Event, POS/ATM Search.
 - **Date/Time Search:** search by inputting date/time.
 - **Event Search:** search by event.
 - **POS/ATM Search:** search by POS or ATM text with time.

8.4.1 Date/Time Search

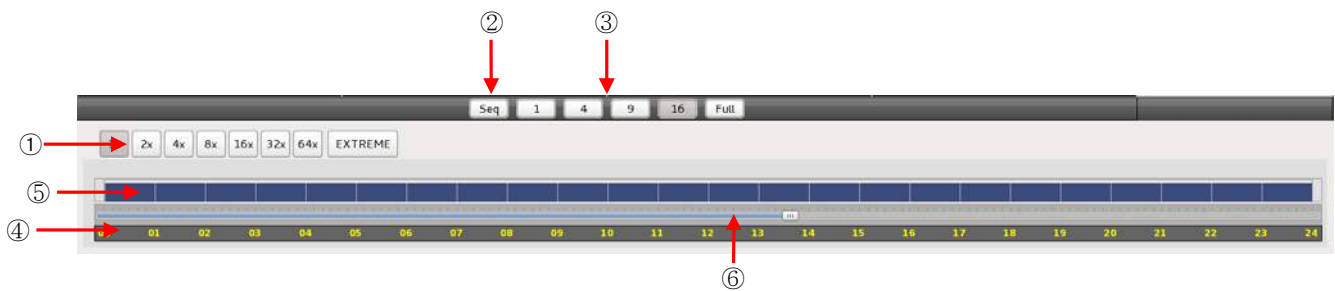
- Click Playback and following screen will display.




- Please choose one of the devices to playback from the Server List.
- Select Date
 - In calendar, dates with recorded data are marked in red.
- Select the date among the dates marked in red.
- Select Time
 - Please select the time that users want to playback by Click ▲, ▼ buttons on the right-hand side to adjust the time or drag the Time Select Bar with mouse.



◀◀	Search previous 'Year'
▶▶	Search next 'Year'
◀	Search previous 'Month'
▶	Search next 'Month'

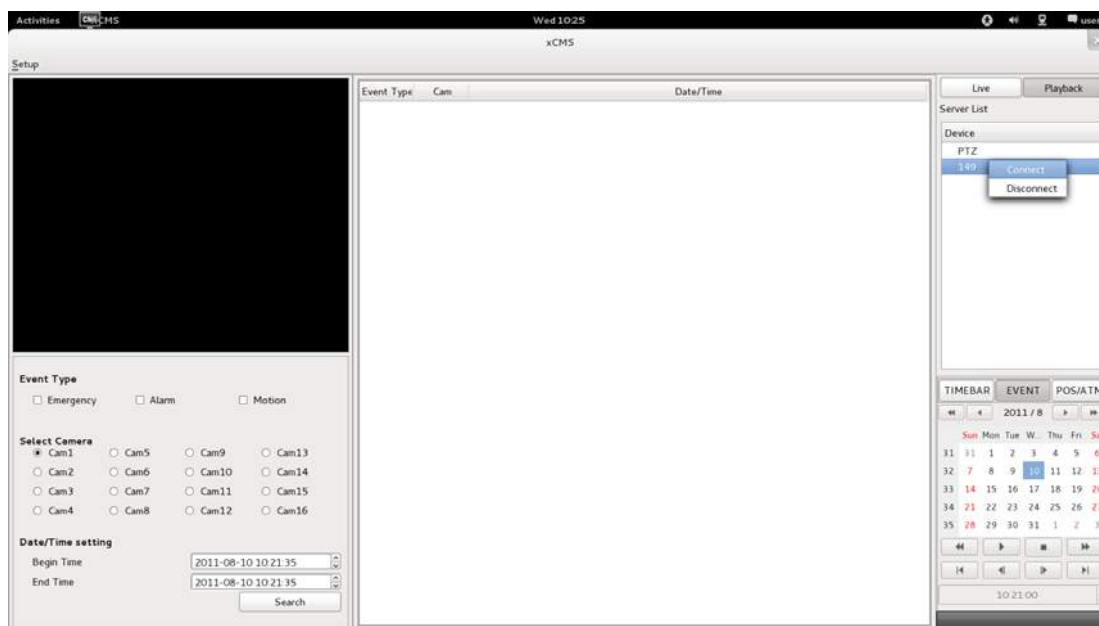


1	Fast Forward/Backward & Playback (Click the button to increase the speed by x1, x2, x4, x8, x16, x32, x64 and Extreme)
2	Sequence Mode
3	Display Mode(Click the button to divide the screen by 1, 4, 9, 16 and Full
4	Time Bar (24 Hour)
5	Data Bar (Recorded data)
6	Time Select Bar

- When Date/Time search is completed, please Click 'Play ' button to begin playback.

8.4.2 Event Search

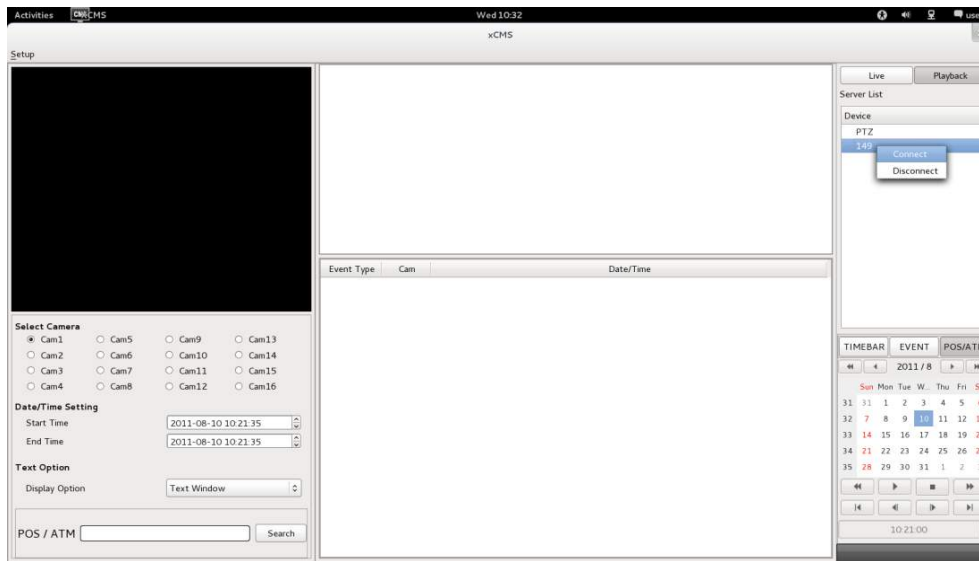
- The Event search allows users to search event recorded data of DVR.
- To start the event search, please Click 'EVENT' and users will see the following screen



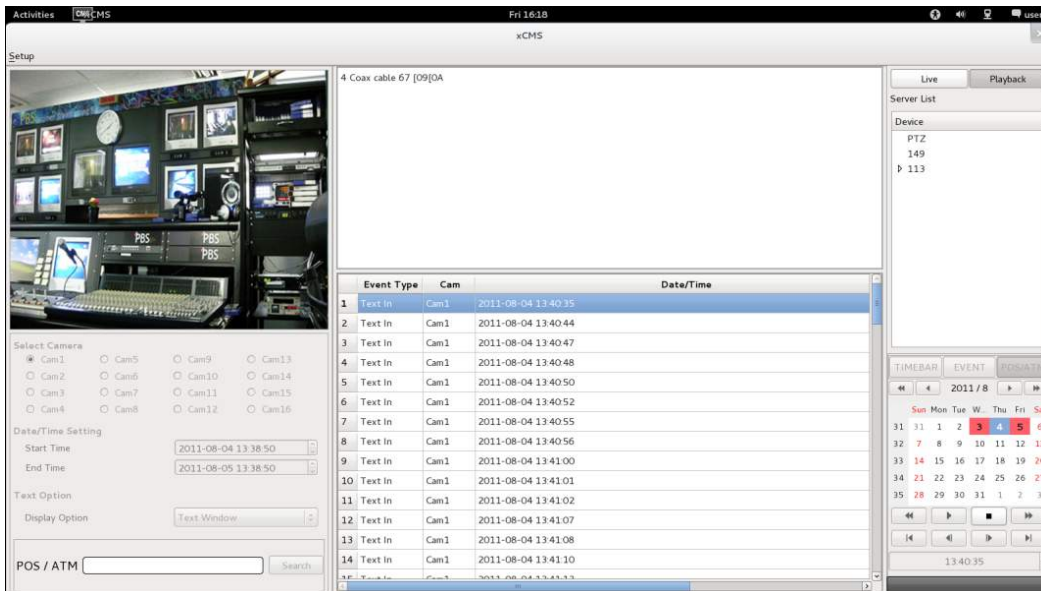
- Please choose one of the devices among the 'Server List' and right Click on the mouse to have popup menu with Connect.
- Please Click 'Connect' to start the event search
- Event search has Event Type, Select Camera and Date/Time setting.
 - ① **Event Type:** it has Emergency, Alarm and Motion. Please choose one event that users want to use.
 - ② **Select Camera:** Please select the camera that users want to view from Cam1 to Cam 16 for the event (Only 1 camera can be selected).
 - ③ **Date/Time setting:** Please select the begin and end time by Clicking the up/down arrows and Click "Search"

8.4.3 POS/ATM

- POS/ATM button allows users to search for the POS/ATM text data by keyword.
- Please Click 'POS/ATM' button right next to the 'EVENT' and users will see the following screen.



- Please choose one of the devices among the 'Server List' and right Click on the mouse to have popup menu.
- Please Click 'Connect' to start the event search
- Event search has Event Type, Select Camera and Date/Time setting.
 - ① **Select Camera:** select a camera which has Text In connection to search (Only 1 camera can be selected).
 - ② **Date/Time setting:** please specify the start and end time
 - ③ **Text Option (Display Option:** Users are able to select the display option of the playback.)
 - Text window: The detected text will be shown on the 'Windows text' right next to the 'Display screen'.
 - Overlay: The text will be overlaid on the playback video in the 'Display Screen'.
 - Both: The text will be overlaid on the video and the text window as well.
 - Hide All: The text will not be displayed in both video and the text window.



- To search the word, please fill out the text box with the searching keyword.



- Please Click 'Search'.

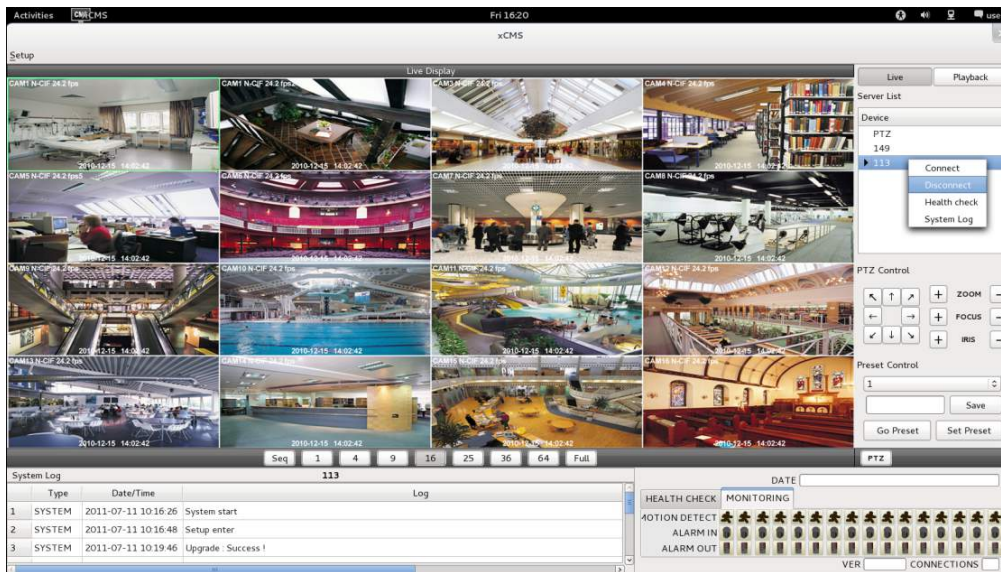
- The following screen shows the result of the POS/ATM search

Event Type	Cam	Date/Time
1	Text In	Cam1 2011-08-04 13:40:35
2	Text In	Cam1 2011-08-04 13:40:44
3	Text In	Cam1 2011-08-04 13:40:47
4	Text In	Cam1 2011-08-04 13:40:48
5	Text In	Cam1 2011-08-04 13:40:50
6	Text In	Cam1 2011-08-04 13:40:52
7	Text In	Cam1 2011-08-04 13:40:55
8	Text In	Cam1 2011-08-04 13:40:56
9	Text In	Cam1 2011-08-04 13:41:00
10	Text In	Cam1 2011-08-04 13:41:01
11	Text In	Cam1 2011-08-04 13:41:02
12	Text In	Cam1 2011-08-04 13:41:07
13	Text In	Cam1 2011-08-04 13:41:08
14	Text In	Cam1 2011-08-04 13:41:10

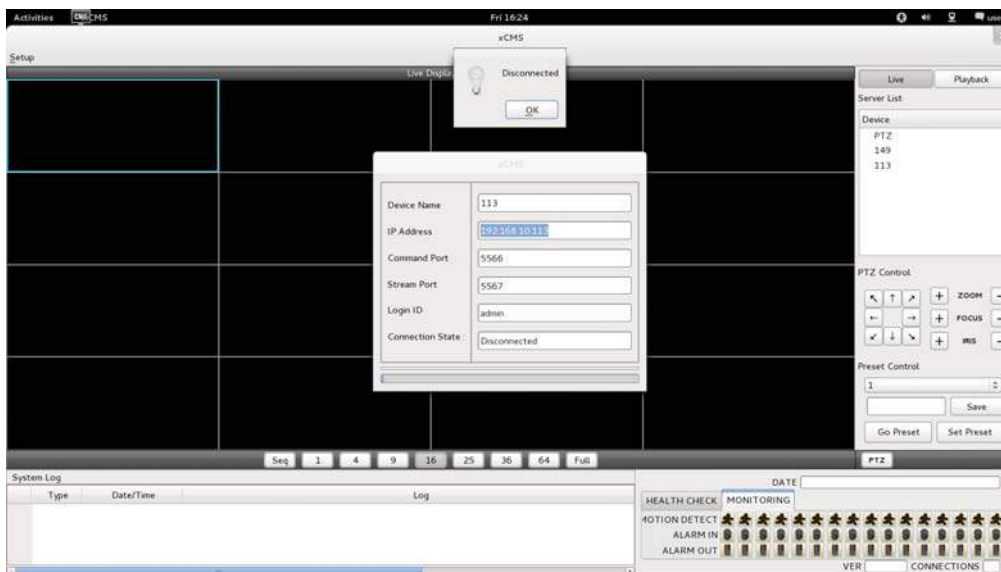
- Double Click on the event that users want to display.

8.5 Disconnection

- When disconnect, please right Click on the connected site and choose 'Disconnect'



- Once users Click 'Disconnect', following screen will display with the message of 'Disconnected'.



8.6 Uninstall

- Please go into the 'Home' folder and right Click on the xCMS icon.
- Please choose 'Move to Trash' to uninstall the xCMS program.

