



AVYCON

**Digital Video Recorder
Quick Start Guide**

1. Notes

- Please read this instruction carefully for correct use of the product and preserve it for reference purposes.
- This manual is suitable for 4/8/16 CH HD-TVI DVR. All the examples and pictures used here are for reference only.
- There may be several technically incorrect places or printing errors in this manual. The updates will be added into the new version of this manual. The contents of this manual are subject to change without notice.
- This device should be operated only from the type of power source indicated on the marking label. The voltage of the power must be verified before using the same. Kindly remove the cables from the power source if the device is not to be used for a long period of time.

2. Packing Check

Please check the device and the accessories after getting the device. If there are any damages, shortages or defects, please contact your dealer immediately.

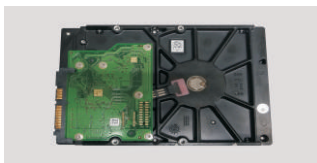
3. HDD Installation

This series of the product supports to install 1 SATA hard drives.

Please use the HDD the manufacturers recommend specially for security and safe field. Please make sure that the device is powered off before the installation.



① Loosen the screws to open the cover.



② Take the HDD out.



③ Put the HDD onto the bottom of the machine.



④ Turn over the machine and secure the HDD with the screws.



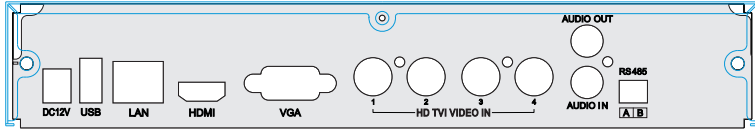
⑤ Connect the power and data cables.



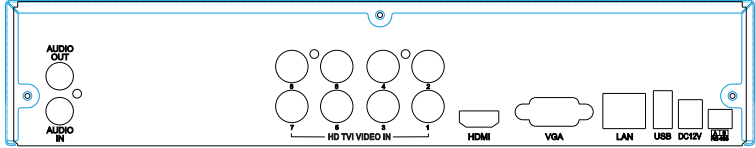
⑥ Install back the cover and secure it with the screws.

4. Rear Panel Instructions

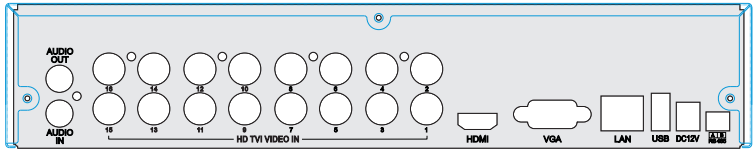
The interfaces of the rear panels are for reference only.



Rear Panel for 4 CH



Rear Panel for 8 CH



Rear Panel for 16 CH

Name	Description	Name	Description
DC12V	DC12V power input	HDMI	Connect to high-definition display device.
USB	Connect USB mouse or USB storage devices.	AUDIO OUT	Audio output; connect to sound box.
LAN	Network port	AUDIO IN	1 CH audio input; connect to microphone.
HD TVI VIDEO IN	HD-TV1 video input	RS 485	Connect to keyboard or speed dome. A is TX+; B is TX-.
VGA	VGA output; connect to monitor.		

5. Startup & Shutdown


Startup:

- ① Connect the monitor.
- ② Connect with the power.
- ③ The device will boot and the power indicator will turn blue.
- ④ A Wizard window will pop up.

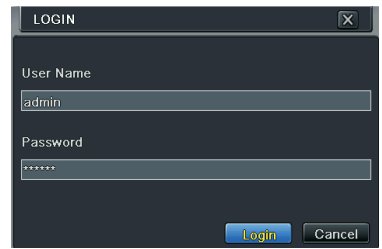
Shutdown:

By mouse – Enter “Main Menu” and then select “Shutdown” icon. This will bring up a shutdown window. The device will shut down by clicking “OK” button. Then disconnect the power.

6. Login

After the wizard setup, you can see the live image. Right click to pop up a menu toolbar. Click  main menu button. This will take you to see a login box. The default username is **admin**; the default password is **123456**.

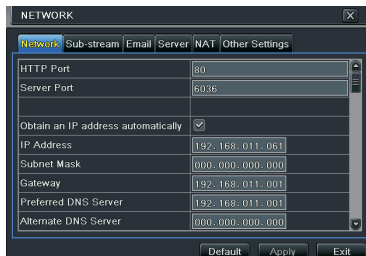
Enter username and password and click “Login” button to go into the main menu setup.



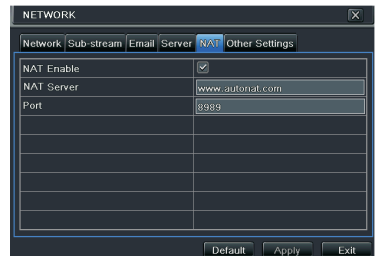
7. NAT

► NAT Settings

- ① The DVR shall be powered on and connected to the network.
- ② Go to Menu→Setup→Network. Refer to Fig 1. You can obtain the IP address, Subnet Mask and Gateway automatically. Also you can manually input them according to the configuration of PC. Please make sure the network segment is the same as that of the network which is used.
- ③ Set the preferred or alternative DNS Server. Click “Apply” to save the parameters.
- ④ Go to Menu→Setup→Network→NAT tab. Refer to Fig 2.
- ⑤ Enable NAT and input the NAT Server and Port number (The default NAT Server is www.autonat.com ; the default Port number is 8989).
- ⑥ Click “Apply” to save the parameters.



(Fig 1)



(Fig 2)

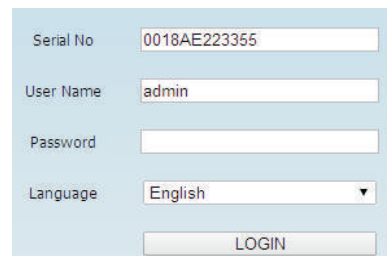
► NAT Access

After finishing the NAT settings, you can enter the NAT Server on the PC (Input <http://www.autonat.com> to go to the IE client). If you are the first time to access the NAT, the network will download the ActiveX automatically. After installing ActiveX successfully, it will pop up the login box:

Serial No: The MAC address of the DVR (Go to Menu →Information→Network to check the MAC address of the DVR).

User Name: the username of DVR, the default username is admin.

Password: the password of DVR, the default password is 123456.

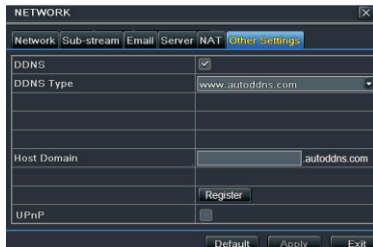


8. DDNS & UPnP Setup

► Quick DDNS Setup

You may set up DDNS to be used in connection when your DVR is set to use PPPoE as its network connection.

- ① Go to Main Menu→Setup→Network→Other Settings.
- ② Enable DDNS and select “www.autoddns.com” in the dropdown list of the DDNS Type. Then self-define the host name. After you register it successfully, save the settings by clicking “Apply” button. Now, you can remotely access the DVR using the domain name via WAN.



► UPnP Setup

You can use the UPnP function to enable the fast connection of the device to WAN via a router without port mapping.

- ① Go to Other Settings tab and enable UPnP and then click “Apply” button to save.
- ② Enable the UPnP function in the router.



☺ * Before setting UPnP, please configure the correct local IP address, subnet mask, gateway and DNS according to the router. Make sure the HTTP port and data port are correctly set. Make sure the router supports UPnP function.

9. Manual Recording

Before recording, please install and format a HDD. Right click the mouse in the live interface to pop up the following menu toolbar. Click  button to start recording.



10. Playback

Right click the mouse in the live interface to pop up the menu toolbar. Click the little triangle button beside  button to set playback time (eg. 5 minutes). Then click  button to play back the record from the past 5 minutes.

